

TECHNICAL

Product Catalog

It's In-Vehicle



Sunit Oy

Taitoraitti 1
FI - 874 00 KAJAANI
FINLAND
V.A.T.: FI-10549603

INFO@SUNIT.FI
+358 (0)8 632 600



*DOWNLOAD DIGITAL
PRODUCT CATALOG*

www.sunit.fi

F-Serial & Screens



IoT Tablet

All-in-One Panel-PC

Tablet Interface SUNIT Screen

IoT Client Terminal

PoE+ Extender

USB-HUB's 2.0 / 3.0

Cameras

Keypads Keyboards

Cables & Adapters

Statives

Antennas

FO Multi-LTE

Work Stations

FO Bike

SUNIT F-Serial 1-DIN Sized FIXED Mount CPU Family

SUNIT-F Serial Computers build on firm and light-weighted geometry designed cast-aluminium mechanics and conformal coated Solid-electronics.

A traditional concept with over 20 years In-Field service experience, have proofed excellent and reliable technology.

Ease and discrete mounting enables safe and invisible placements.

Inbuilt IoT-computer for CAN-Bus, sensors and data-I/O's are ease-to-reach by Client applications.

Rapid 72-channel 3D-GPS with G-sensor and ADR ensures accurate positioning and serves dual GPS-interface for Multitask-Applications

Tri-graphic and Rapid Storage technology with up-to 4 Stand-Alone HMI (2 x Digital-LVDS, Display-Port, Wi-Fi) is efficient and cost-effective solution to exploit shared PC technologies.

CPU BASE MODEL	FQ5	FDQ	FMD
CPU	i5 4 X 2.9 GHz	i7 4 X 2.0 GHz	i7 4 X 3.0 GHz
RAM	8GB (8GB)	8GB (8GB)	8GB (8GB)
STORAGE	SSD 256GB (512GB-1TB)		
WIN O/S	10	10	10
LINUX O/S	UBUNTU	UBUNTU	UBUNTU
AUDIO OUT	SCREEN, STEREO-LINE & AUDIO I/O		
MIC.-IN	X	X	X
OEM SCREENS	2X	2X	2X
DISPLAYPORT	1X	1X	1X
ETHERNET 1GB	1X	1X	1X
USB3.0	3X	3X	3X
SIM-SLOT	2X	2X	2X
CAN	2X	2X	2X
DIGITAL-IN	3X	3X	3X
DIGITAL-OUT	4X	4X	4X
ANALOG-IN	4X	4X	4X
GYRO/ACC.	X	X	X
GPS/GNSS	X	X	X
TELE-MODEM	4G / LTE	4G / LTE	4G / LTE
SERIAL CONN.	1X	1X	1X
DUAL-GNSS	X	X	X

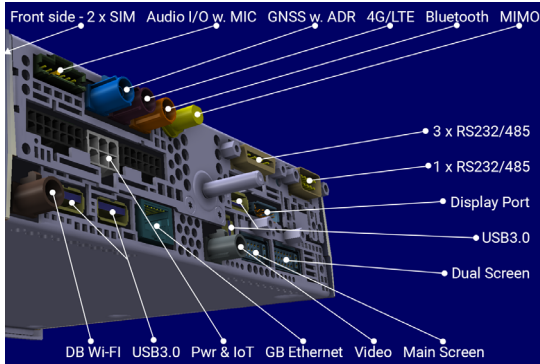
OPTIONALS

WI-FI	X	X	X
BLUETOOTH	X	X	X

CPU VARIANT MARKINGS	T	TI	TS	TE	S	E	M-LTE	MC-BIKE
USB 3.0	3X	3X	3X	3X	4X	4X	3X	3X
USB 2.0	-	-	-	-	-	-	1X	2X
ANALOG VIDEO-IN	-	-	-	-	-	4X	-	-
SERIAL CONN.	-	-	1X	4X	4X	4X	4X	1X
DISLPAYPORPT	1X	1X	1X	1X	1X	1X	-	-
ETHERNET 1GB	2X	2X	2X	2X	1X	1X	1X	1X

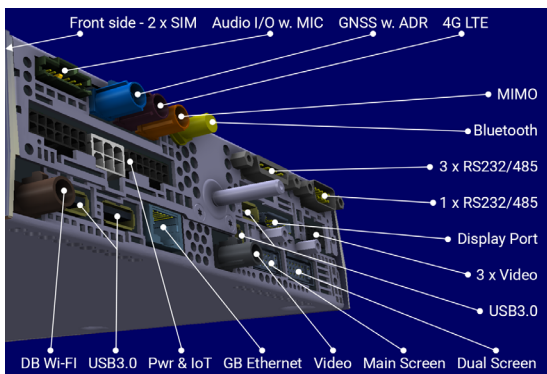


SUNIT FQ5 INTEL i5 4 x 1.9GHz CPU SERVER



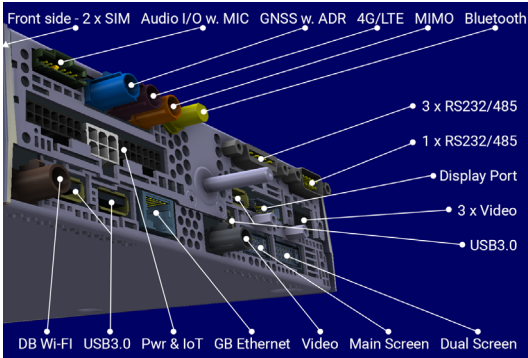
- 6th Gen. Wide-temp. Intel® i5 6442EQ Skylake
- 4 x 2.9GHz
- Intel HD Graphics 530
- 3 x Screen Interfaces
- Up to 4 x Stand-alone Video
- Up to 4 x RS232 / 485
- Dual-Band Wi-Fi, BT4.2, GB-Ethernet
- 4G / LTE. Dual-SIM
- Stereo-Lines, Audio-I/O, Screen-Audio
- Accurate 72-channels 3D GNNS, ADR
- 3D-Gyro
- 2 x CAN, D-IO's, An-In's
- Vehicles; VSS, Gearshift sense, IGN-Sense
- 9 ... 36V / Core-Pwr. monitory

SUNIT FDQ INTEL i7 4 X 2.0GHz CPU-SERVER



- 6th Gen. Wide-temp. Intel® i7 6822EQ Skylake
- 4 x 2.0GHz
- Intel HD Tri-graphic
- 3 x Screen Interfaces
- Up to 4 x Stand-alone Video
- Up to 4 x RS232 / 485
- Dual-Band Wi-Fi, BT4.2, GB-Ethernet
- 4G / LTE. Dual-SIM
- Stereo-Lines, Audio-I/O, Screen-Audio
- Accurate 72-channels 3D GNNS, ADR
- 3D-Gyro
- 2 x CAN, D-IO's, An-In's
- Vehicles; VSS, Gearshift sense, IGN-Sense
- 9 ... 36V / Core-Pwr. monitory

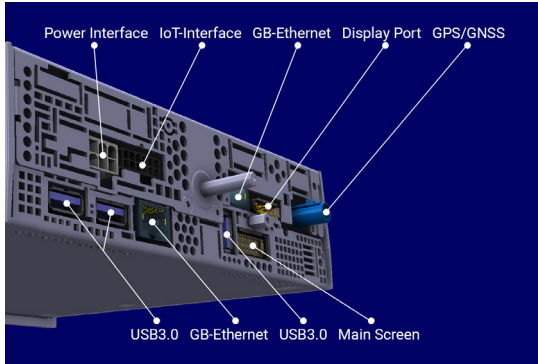
SUNIT FMD INTEL i7 4 X 3.0GHz FOR INTELLIGENCE DUTIES



SUNIT FMD is designed for Applications that call for powerful graphic processing, High-speed Arithmetic, Multi-HMI as Mission Critical and ANPR.

- 7th Gen. Wide-temp. Intel® i7 7820EQ Kaby Lake H
- 4 x 3.0GHz
- Intel HD Tri-graphic
- 3 x Screen Interfaces
- Up to 4 x Stand-alone Video
- Up to 4 x RS232 / 485
- Dual-Band Wi-Fi, BT4.2, GB-Ethernet
- 4G / LTE. Dual-SIM
- Stereo-Lines, Audio-I/O, Screen-Audio
- Accurate 72-channels 3D GNSS w. ADR & Gyro
- 3D-Gyro
- 2 x CAN, D-IO's, An-In's
- Vehicles; VSS, Gearshift sense, IGN-Sense
- 9 ... 36V / Core-Pwr. monitorly

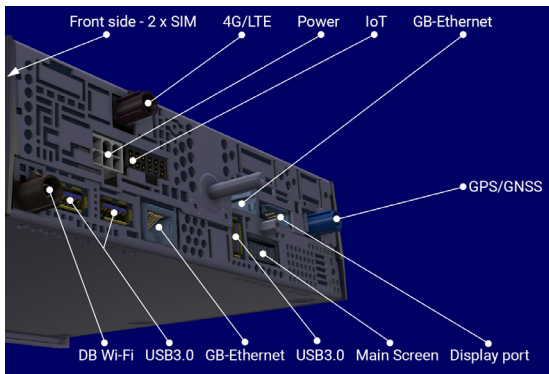
SUNIT FQ T DUAL GB-ETHERNET INTEL I7 CPU SERVER FOR INDUSTRY



Suitable Computers: FQ5, FDQ, FMD

- CPU:
 - Intel® i5-7440EQ Kaby Lake-H, 4x2.9GHz
 - Intel® i7 6822EQ Skylake-H 4x2.0GHz
 - Intel® i7 7820EQ Kaby Lake-H 4x3.0GHz
- Intel Full-HD Dual-Graphics
- 2 x GB-Ethernet for Multiple Gateways
- 2 x Screen Interfaces
- 1 x Video
- Dual-Band Wi-Fi, BT4.2
- Screen-Audio
- Accurate 72-channels 3D GNSS, ADR
- 3D-Gyro
- 2xCAN, Digital I/O's
- Vehicles; VSS, Gearshift sense, IGN-Sense
- 9 ... 36V / Core-Power monitority

SUNIT FQ T i DUAL GB-ETHERNET INTEL I7 CPU SERVER FOR FIELD INDUSTRY

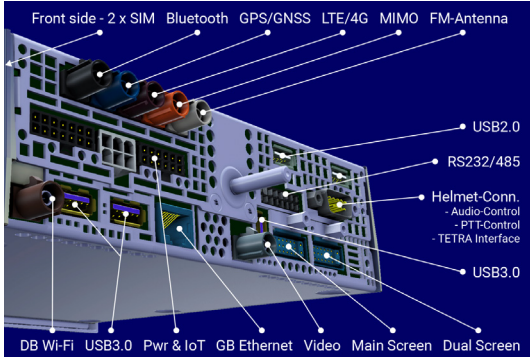


Suitable Computers: FQ5, FDQ, FMD

- Wide-temp. Intel® i7 6822EQ Skylake 4x2.0GHz
- or
- Wide-temp. Intel® i7 7820EQ KabyLake H 4x3.0GHz
- Intel Full-HD Dual-Graphics
- 2 x GB-Ethernet for Multiple Gateways
- 2 x Screen Interfaces
- 1 x Video
- Dual-Band Wi-Fi, BT4.2
- 4G / LTE. Dual-SIM
- Screen-Audio
- Accurate 72-channels 3D GNSS w. ADR & Gyro
- 3D-Gyro
- 2 x CAN, D-IO's, An-In's
- Vehicles; VSS, Gearshift sense, IGN-Sense
- 9 ... 36V / Core-Pwr. monitority

SUNIT FQ Bike-Assist MISSION CRITICAL CPU SERVER / VOICE-ROUTING & DAB+

SUNIT FQ Bike-Assist is computer for Patrol-bike service. The Computer is featured by FM-receiver with DAB+ traffic messaging for Navigation Applications and Voice-control to select prioritized voices between Navigator, Phone, PC and Tetra.



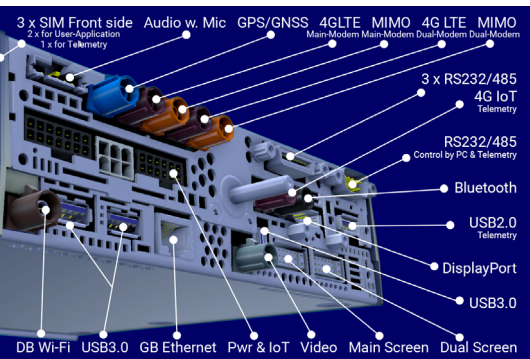
- Wide-temp. Intel® i7 6822EQ Skylake 4x2.0GHz or
- Wide-temp. Intel® i7 7820EQ KabyLake H 4x3.0GHz
- Intel Full-HD Dual-Graphics
- GB-Ethernet
- 2 x Screen Interfaces
- FM-DAB+ Interface
- Voice-Router & PPT Controller for Tetra (Option)
- 1 x Video
- Dual-Band Wi-Fi, BT4.2
- Stereo-Lines, Screen-Audio
- Accurate 72-channels 3D GNSS, ADR
- 3D-Gyro
- 2 x CAN, D-IO's, An-In's
- Vehicles; VSS, Gearshift sense, IGN-Sense
- 9 ... 36V / Core-Pwr. monitoring

Suitable Computers: FQ5, FDQ, FMD

SUNIT FQ Multi-LTE ALWAYS CONNECTED ON CRITICAL COMMUNICATION

MULTI-LTE solution ensures for Critical communication required All-time connections. There is Up-to 3 modems, 2 for Client applications and 2 for IoT.

There is Individual SIM-Slots for all 3 Modems



- Intel HD Tri-graphic
- 1 x GigaBit-Ethernet
- 3 x Screen Interfaces
- 1x Video (Option 4 x Video)
- Dual-Band Wi-Fi & BT4.2,
- Single, Dual or Tri LTE Modems
Individual SIM-Slots
- As Option:
FM-receiver with DAB+
Voice-priority control (4-channels)
Additional Android/Linux CPU for IoT
- 2 x CAN, D-IO's, Analog-In's
- Accurate 72-channels 3D GNSS
- 3D-Gyro
- Vehicles; VSS, Gearshift sense, FMS
- Intelligent Power-Moding
- 9 ... 36V / Core-Power monitoring

Suitable Computers: FQ5, FDQ, FMD

GENERATION UPGRADE

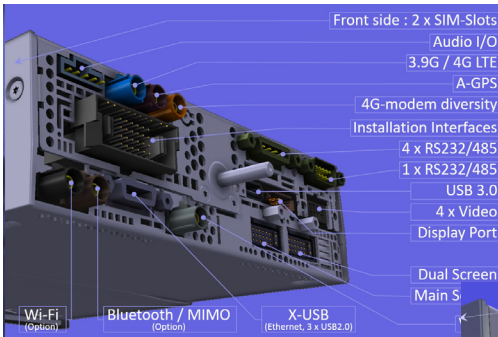
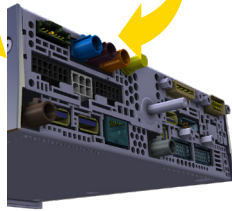
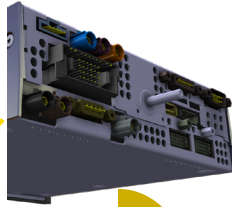
F2 to FQ Serial

REPLACE CPU – KEEP OTHER STUFF

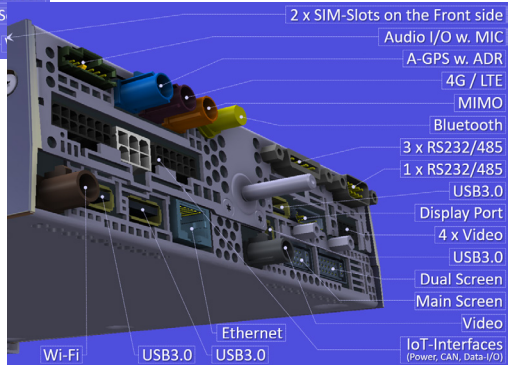
- Replace F2 –serial Computer with new FQ-Serial Computer
- Keep Screen, Antennas, Keyboards, etc.
- All Harness-Adapters are included on delivery
- Quick installation



RE-CONNECT



F2 SERIAL



FQ SERIAL

SUNIT WorkStation **MOBILE RUGGED TOUCH-STATION 55" GORILLA-GLASS SCREEN**

SUNIT Workstation is Mobile, waterproof and ruggedized touch computing unit for harsh environmental industry, as Constructions, Minings, Engineering's etc. Powerful SUNIT-Computer technology performs even the most demanding 3D-graphical Applications. GB-Ethernet, Wi-Fi and LTE warrants communication by an appropriate available infra. Hard coated PCAP Water & Dustproof Screen opens the usability even on most demanding environments.



- 9th Generation Intel® Core™ i7-9700E Coffee Lake
- 8-core, 8 x 2.6GHz (Turbo: 8 x 4.4GHz)
- Intel® UHD Graphics 630
- NVIDIA Quadro P2000 Video with NVIDIA Mosaic
- GPS, LTE, Wi-Fi, Dual GB-Ethernet
- Stereo-Sound & Microphone
- Projective Capacitive (PCAP) touch
- 15-finger Touch technology
- Gorilla-Glass, 60950-1 ball-drop proof, scratch-resistant, edge-to-edge glass
- Touch by Finger / Stylus / Glove (latex)
- Resolution 3840 x 2160 / @60GHz / 4K UHD
- Brightness (cd/m2) 500nits
- Excellent View Angles 89/89/89/89 Degrees
- IPS-LED Backlights for Best Colour & Viewing angles
- IP54, Conformal Coated Electronics
- Easy to move and Stable-stationary
- AC-Powered / 220V



SUNIT SCREENS

RELIABLE TOUCH-SCREEN FOR HARSH DUTIES



- Excellent Wide Viewing Angles
- High-Bright & Super-Bright
- Auto-ambient & Manual Brightness control
- OSD (On-Screen-Display) -technology
- Touch-on-Windows
- Touch-on-OSD
- Touch Interface
- Full Digital LCD TFT Screen
- Smart Powered
- Loud Speakers
- Conformal Coated electronics

	Sunit 7 Wide	Sunit 10	Sunit 12	Sunit 19 Wide	Sunit 12 HD
Type	7,0" Wide TFT	10,4" TFT	12,1" TFT	18,5" TFT	11,6" TFT
Resolution	WVGA (16:9)	XGA (4:3)	XGA (4:3)	W-XGA (16:9)	FULLHD (16:9)
Weight	485 G	1,2 KG	1,6 KG	< 3 KG	1,4 KG
Dimension	183 X 121 X 42	244 X 202 X 46	284 X 237 X 46	475 X 310 X 55	293 X 203 X 36
Interface	FULL DIGITAL INTERFACE, LVDS				FULL DIGITAL INTERFACE, FPD-LINK
User Interface	RESISTE TOUCH SCREEN NON-CLARE				CAPACITIVE MULTI-TOUCH SCREEN
Visibility angle	HORIZONTAL +70° / -70° VERTICAL +60° / -60°	HORIZONTAL +88° / -88° VERTICAL +88° / -88°	HORIZONTAL +88° / -88° VERTICAL +80° / -80°	HORIZONTAL +88° / -88° VERTICAL +80° / -80°	HORIZONTAL +88° / -88° VERTICAL +88° / -88°
Brightness	ADJUSTED BY AUTO AMBIENT CONTROLLED / MANUAL				
Housing	PC/ABS - C2950 V0+UV				
Compliant	ECE 10R-04, ISO-16750, FCC CE				



Sunit-OSD (On-Screen-Display).
The OSD with Touch makes possible for applications outside traditionally O/S environment for e.g. CAN-Bus communications, Messaging, Reversing Camera, etc.
The Screen Adjustments by OSD for Brightness, Contrast and Volume are Screen-Individually.

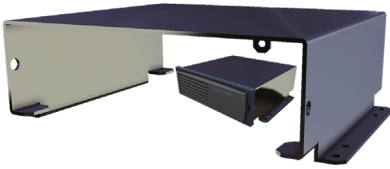
Soft Impact / Sun Cover
For Ergonomics.

12.1" Super-bright 1400NIT Screen — for Luminous-Intensive Conditions.



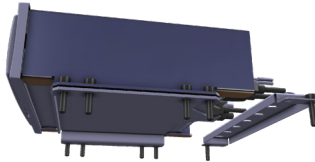
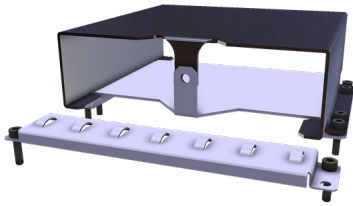
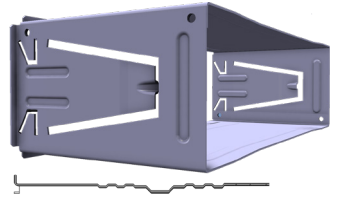
Connect SUNIT-Screen on Tablet - PC / Toughbook as a Dual-Screen!

F-Serial SIDE PARTS

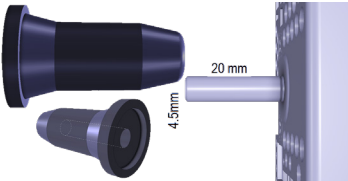


F-Serial CPU-Surface Mounting Case. Aluminium.

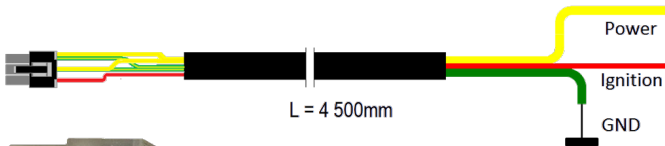
1-DIN Sized Mounting Frame & Removal Tools. Suits for all 1-DIN devices.



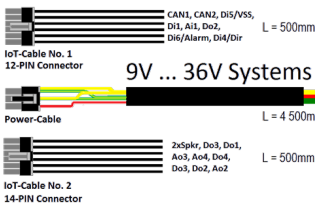
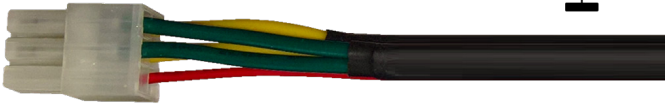
Robust CPU-Mounting Kit. Aluminium. For installation on High-Impacting Environments.



Shock Absorber for 1-DIN Sized CPU. Suits for all 1-DIN devices.



9V .. 36V Power Cable harness.

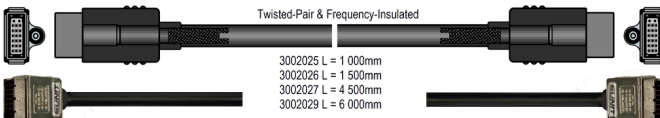


9V ... 36V Systems



Tailored Lengths available

9V .. 36V Power Cable harness with IoT Harnesses (CAN, Digital-I/O's, etc.).



F-Serial Screen Cable.

SUNIT-WorkBook Tablet-PC for Industry and Field.

High-Brightness Wide-View Touch-Screen technology for demanding environments.

SUNIT WorkBook Q8 QUAD-CORE WINDOWS TABLET-PC



- Intel Atom® Processor X Series x5-Z8350
- Intel HD Graphics 400 (Braswell)
- High-Bright Screen, 850cd LED.
- 5-Point Touch
- Microphone, Audio
- Front & Rear Cameras
- 4g, LTE
- Dual-Band Wi-Fi, BT4.1
- Stereo-Lines, Screen-Audio
- Accurate 72-channels 3D GNSS, ADR Vehicles; 9 ... 36V

SUNIT WorkBook Q8A QUAD-CORE ANDROID TABLET-PC



- 2x 2.0 GHz ARM Cortex-A75
- 6x 1.8 GHz ARM Cortex-A55
- Cores: 8
- ARM Mali Graphics. G52 M, 800 MHz, Cores: 3
- Full support for 2D/3D graphics applications
- 800*1280, 500/800cd/m² LED.
- 5-Point Touch
- Microphone, Audio
- Front 5MP & Rear 13MP Cameras
- 4G, LTE
- Wi-Fi5, BT5.0
- Stereo-Lines, Screen-Audio
- Accurate 72-channels 3D GNSS, ADR Vehicles; 9 ... 36V

SUNIT WorkBook Q8A 5G QUAD-CORE ANDROID TABLET-PC



- 2x 2.4 GHz ARM Cortex-A78
- 6x 2.0 GHz ARM Cortex-A55
- Cores: 8
- ARM Mali. G68 MC4, 800 MHz, Cores: 3
- Full support for 2D/3D graphics applications
- 800*1280, 500/1000cd/m² LED.
- 5-Point Touch
- Microphone, Audio
- Front 5MP & Rear 13MP Cameras
- 5G, LTE
- Wi-Fi6, BT5.2
- Stereo-Lines, Screen-Audio
- Accurate 72-channels 3D GNSS, ADR Vehicles; 9 ... 36V

SUNIT **WorkBook Q10** QUAD-CORE WINDOWS TABLET-PC



- Intel Atom® Processor X Series x5-Z8350
- Intel HD Graphics 400 (Braswell)
- High-Bright Screen, 1000cd LED.
- 5-Point Touch
- Microphone, Audio
- Front & Rear Cameras
- 4g, LTE
- Dual-Band Wi-Fi, BT4.1
- Stereo-Lines, Screen-Audio
- Accurate 72-channels 3D GNSS, ADR Vehicles; 9 ... 36V

SUNIT **WorkBook Q10A** QUAD-CORE ANDROID TABLET-PC



- 4x 2.0 GHz ARM Cortex-A73
- 4x 2.0 GHz ARM Cortex-A53
- Cores: 8
- ARM Mali Graphics. G72 MP3, 800 MHz, Cores: 3
- Full support for 2D/3D graphics applications
- 1280*800, 450/800 NITS
- 5-Point Touch
- Microphone, Audio
- Front & Rear Cameras
- 4G, LTE
- Dual-Band Wi-Fi, BT4.1
- Stereo-Lines, Screen-Audio
- Accurate 72-channels 3D GNSS, ADR Vehicles; 9 ... 36V

SUNIT All-in-One Panel-PC for Industry and Fleet.

Fixed-Mount Panel-PC is ideal HMI-Monitor for tough working demands. Low-Voltage technology and Intelligent power management maintains Long-time service and safe Power supply.

SUNTI AT7

QUICK-START 4 X 1.6GHz ALL-IN-ONE PANEL-PC



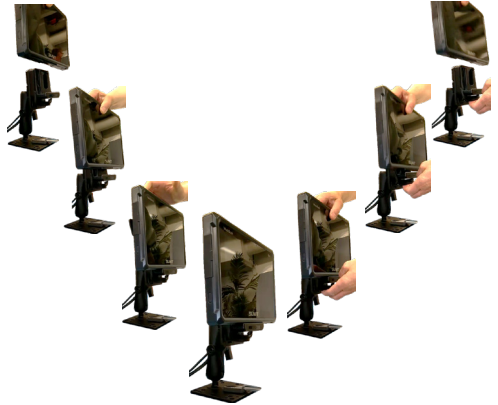
- Open Architecture Computing
- Intel Atom x7-E3950, Apollo Lake, 4 x 1,6 GHz.
- 2D and 3D Graphics
- Touch Screen
- 7" Full Digital LCD Screen
- Loud Speakers
- 72-Channel GPS / GLONASS
- 4G/LTE
- Integrated 3G Gyro
- IGN-Start
- CAN, USB, LAN, Serial Interfaces
- 9 ... 36V / Core-Pwr. monitory



SUNIT SNAP IN-VEHICLE DOCKING STATIONS



- Docking Stations for Sunit Workbook Tablets
- Compatible with Windows and Android
- Quick Fix and Release (SNAP)
- Cable Harness with Power & USB for In-Vehicle use
- Self-Powered 9...36VDC
- 2 x USB 2.0 ports
- ING controlled power for smart charging of Tablet and USB ports.
- USB battery charging support up to 1.5A (Front USB port)



SUNIT KEY-RACK RACK FOR KEYBOARD ON STATIVE



- Keyboard-rack, for Tablet-PC & Screen
- Light-weight, Aluminum



SUNIT

MOUNTING BRACKETS



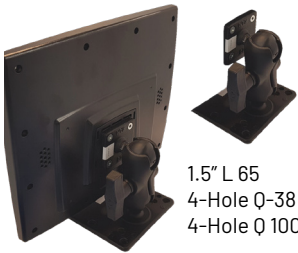
1" L 60
4-Hole Q-38
4-Hole D 50



1" L 85
4-Hole Q-38
4-Hole D 50



1" L 140
4-Hole Q-38
4-Hole D 50



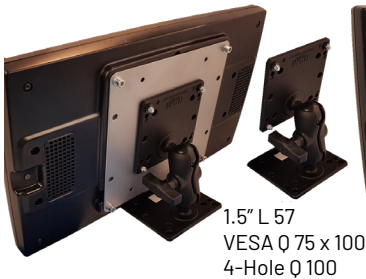
1.5" L 65
4-Hole Q-38
4-Hole Q 100



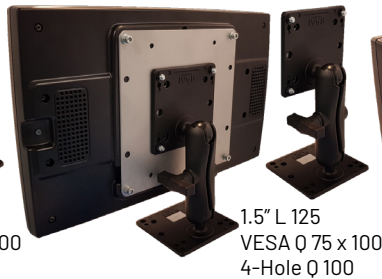
1.5" L 150
4-Hole Q-38
4-Hole Q 100



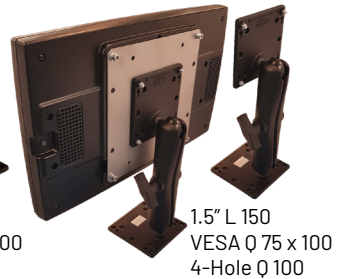
1.5" L 170
4-Hole Q-38
4-Hole Q 100



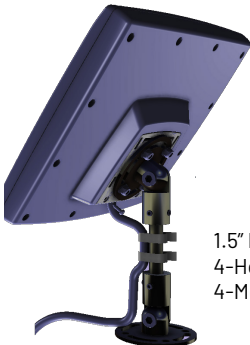
1.5" L 57
VESA Q 75 x 100
4-Hole Q 100



1.5" L 125
VESA Q 75 x 100
4-Hole Q 100



1.5" L 150
VESA Q 75 x 100
4-Hole Q 100



1.5" L 125
4-Hole D 54
4-Mortice D 54

SUNIT IoT Client-Terminal Open-Architecture Computing

Designed for Internet-of-Things on Demanding environments within Industry, Fleet and Machinery.

SUNIT *iVia* IoT CLIENT-TERMINAL



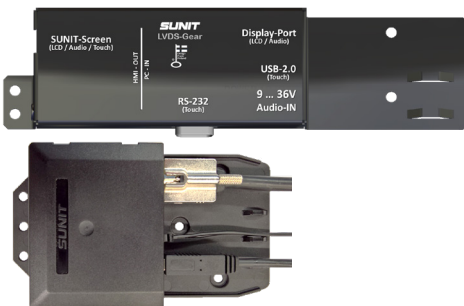
- Open Architecture
- Freescale i.MX355 ARM11, @ 532MHz
- GNSS + ADR
- 3G HSPA + Wireless Data
- 3-Axis Accelerometer sensor
- Ethernet & WLAN
- Sunit-TLINK Vehicle-interface Application
- 2 x CAN, Analog & Digital-I/O's, Speed-In
- 9 ... 36V Core-Pwr. Watch-dock
- Status-LED's
 - 4 x Programmable (R/G/R/G)
 - 1 x reserved for MCU

SUNIT *Gate-Gear* POE+ INJECTOR FOR INDUSTRY, FLEET & INFRA



- Plug and play PoE+ network devices
- 4 x PoE+ Ethernet port
- 2 x Gigabit Ethernet port
 - 1 x Upstream
 - 1 x Downstream)
- Supplies Downstream-power to
 - PoE, up to 15 W per device
 - PoE+, up to 30 W per device
- Metal enclosure
- Conformal-coated Electronics
- Net-connection up to 100 meters
- For wide operating temperature range of -40 to 75 °C
- LED indicators confirm PoE and network connectivity
- Individual PoE+ I/O Control from User-application
 - Control via Serial Interface

SUNIT *LVDS-Gear* DUAL-SCREENING FOR TABLETS



- Connected on USB3.0 or Display-Port Interface
- Transfer of:
 - Graphic
 - Voice
 - Touch
- Self-Powered 9V ... 36V
- Conformal-coated Electronics
- Strain-reliefs for Harnesses
- For Harsh Conditions
- Impact-resist Casing



SUNIT HD-GEAR **DUAL-SCREENING FOR TABLETS**



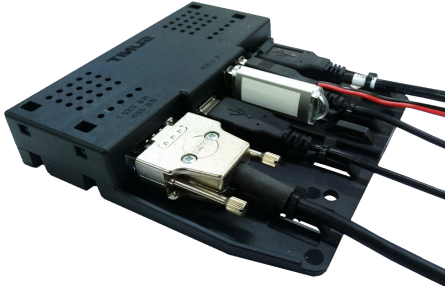
- Can be connected to DisplayPort or HDMI port.
- USB connection transfers
 - Touch
 - Audio
 - USB-ports available in display
- Self-Powered 9V.....36V
- Conformal-coated electronics
- Strain reliefs for harnesses
- For Harsh Conditions
- Impact resist casing

SUNIT USB-GEAR 4G/LTE MODEM **SELF-POWERED 4G/LTE MODEM WITH GNSS FOR INDUSTRY & FLEET**



- 4 x USB2.0
- 1 x RS-232/485 with Configurable Termination
- 4G Modem CAT4 150/50 Mbs
- GPS / GNSS
- Antenna connectors GNSS/LTE/MIMO
- Alarm button input
- Secure chip for customer purposes (Option)
- USB 2.0
- For Harsh Conditions
- Self Powered
- High-Powered Downstream for rough devices
- Compatible with Windows and Linux
- Conformal-Coated Electronics
- Casing: PC/ABS - V0+UV
- Strain-reliefs for Harnesses

SUNIT USB2.0 HUB SELF-POWERED FOR INDUSTRY & FLEET



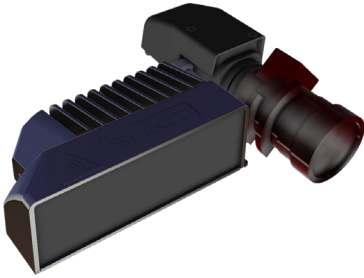
- 3 x USB2.0
- 1 x RS-232/485
- USB-2.0 Upstream
- For Harsh Conditions
- Self Powered
- High-Powered Downstream for rough devices
- Compatible with Windows and Linux
- Conformal-Coated Electronics
- Casing: PC/ABS - V0+UV
- Strain-reliefs for Harnesses

SUNIT USB3.0 HUB SELF-POWERED FOR INDUSTRY & FLEET



- 3 x USB2.0
- 4 x USB3.0
- USB-3.0 Upstream
- For Harsh Conditions
- Self Powered
- High-Powered Downstream for rough devices
- Compatible with Windows and Linux
- Conformal-Coated Electronics
- Casing: PC/ABS - V0+UV
- Strain-reliefs for Harnesses

SUNIT FOX **SUPER-SENSE IR-CAMERA**



SUNIT-FOX, 1/2" CCD for capturing. LED-IR's Flashing is Videoframe-synchronized. It is capable of being controlled via RS-485 Interface.

- Signal type: Composite video/50 fps
- 22.2-6mm Focal Length with 2.7x Zoom
- 1/2" CCD Sensor
- 132° Angle of View
- Auto/Manual White Balance and Exposure, gamma
- Composite video output
- RS-485 Control
- 2.7x optical zoom F1.3 to T360
- Manual focus
- IR-Light Operational Distance 15 m
- LED- IR
- IR-Light Flashes Frame-synchronized

SUNIT SECUR **SUPER-SENSE WATERPROOF CAMERA**



Full-HD latest Sony FCB-EV7520A technology. 30X Optical Zoom enables a Long-distance monitoring.

- Full HD (1080/60p) images
- Approx. 2.13 Megapixels
- Day/Night Clear vision
- 12x digital zoom. (360x with optical zoom)
- 30x optical zoom
- 1/1 s to 1/10,000 s, 22 steps Electronic Shutter
- Backlight Compensation
- Autofocus
- E-Flip, Nega Art, Black & White, Mirror image, Color enhancement
- Auto & Manual Exposure Control
- S/N Ratio More than 50 dB
- Pixel-by-pixel Visibility Enhancer and De-fog
- Built-in image stabilizer
- Aluminium Casing

SUNIT SCOUT **HIGH-RESOLUTION SURVEILLANCE CAMERA**



Full-HD latest Sony FCB-EV7520A technology. **SUNIT-Camera Application** with Pre-settings enables quick one-touch swap between environmental influence.

- Full HD (1080/60p) images
- Approx. 2.13 Megapixels
- Day/Night Clear vision
- 12x digital zoom. (360x with optical zoom)
- 30x optical zoom
- 1/1 s to 1/10,000 s, 22 steps Electronic Shutter
- Backlight Compensation
- Autofocus
- E-Flip, Nega Art, Black & White, Mirror image, Color enhancement
- Auto & Manual Exposure Control
- S/N Ratio More than 50 dB
- Pixel-by-pixel Visibility Enhancer and De-fog
- Built-in image stabilizer
- PC/APS Casing

SUNIT MINI-SCOUT SMALL-SIZE WATERPROOF CAMERA



Small-sized (42 x 42 x 35 mm) Mini-Camera. Waterproof Mini-camera for Out- and Indoor surveillance.

- Driver Free USB3.0 cam 2MegaPixels MJPEG
- 50fps 1080P
- Sony IMX291 Sensor
- Support OTG function
- 6mm Lens
- 1920(H)x1080(V)
- 50 fps
- Electronic rolling shutter / Frame exposure
- USB Bus Power

SUNIT R IR-REVERSING CAMERA



SUNIT-R, Car-Plate IR-Camera. Day-Around reversing camera.

- Vertically adjustable Camera-Kit
- Strong Infra-Red for Night-Visio
- PAL-Color Camera
- 132° Angle of View
- LED-IR Lights for night visual
- Wire-Connectors as Ordered.
- Harness-Length as Ordered.

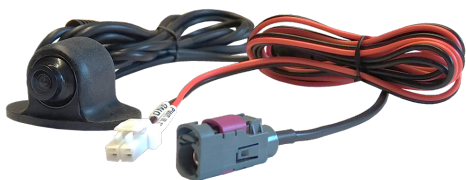
SUNIT IC360 INDOOR SURVEILLANCE IR-CAMERA



SUNIT-IC360, Small Indoor Color-Camera. Discrete-Mounted Indoor Camera. Life-saving IR-Camera for Public areas and Cabins.

- Image device: 1/4" CMOS
- Picture pixels: 640 x 480
- Signal system: NTSC/ PAL
- Synchronization system: Internal
- Horizontal definition: 420 TV lines
- Minimum illumination: 0.2 lux
- S/N ratio: Better than 45 dB
- Back light compensation: Automatic
- Viewing angle: 120 -170°
- Water-proof grade: IP67
- Video output: 1vpp 75Ω

SUNIT 360 LENS-ROTATING SURVEILLANCE CAMERA



SUNIT-360 mini Surveillance camera. Camera for areas where the mounting should be invisible and unnoticeable.

- Anti fog glass.
- Signal system: NTSC/ PAL
- CCD imaging sensor
- 3D noise reduction
- Image Sensor: CCD 7080D TV system
- Horizontal Resolution: 600 TV lines
- View Angle: 150 degree
- White Balance: Auto
- Bright color separation

Rugged Keyboard

FULLY RUGGED COMPOSITE KEYBOARD



- Ruggedized industrial keyboard
- Robust ABS Polycarbonate casing
- IP68 water proof sealed
- NVIS-Compliant Backlit Keyboard
- Industrial silicone Key-Enclosure
- Tactile key feel, key travel 1.0mm
- Multi-touch touchpad (mouse and scroll)
- VESA 75 and AMPS mounting provisions
- 297 x 192 x 22 mm, 0,77kg
- Applications: Medical, Military, Industrial, Fleet

Semi-Rugged Keyboard

KEYBOARD FOR INDUSTRY FLEET AND MEDICS



- Fully Sealed
- LED-Lighted, adjustable
- For Fleet and Industry
- Tactile key feel, key travel 1.0mm
- USB-Connected
- Touchpad
- 373 x 138 x 23 mm - 0,68kg
- Excellent Tactile Key-Feel
- Cable length: Standard 2.0m
- White-coloured for Med's

ACK-540 Mouse-Keyboard

COMMERCIAL MOUSE-KEYBOARD FOR INDUSTRY AND FLEET



- Integrated Touchpad
- Low-profile tactile keys
- Membrane key switches
- Space-saving Design
- Tactile key feel, key travel 1.5mm
- 227 x 289 x 27 mm
- 720g
- USB-Connected
- Cable length: Standard 2.0m
- Layouts - ask availability

ACK-595U Keyboard

COMMERCIAL KEYBOARD FOR INDUSTRY AND FLEET



- Compact design
- Easy typing
- Low-profile tactile keys
- Membrane key switches
- Space-saving Design
- Tactile key feel, key travel 1.5mm
- 291 x 154 x 29 mm
- 580g
- USB-Connected
- Cable length: Standard 2.0m
- Layouts - ask availability

SUNIT **Mouse-pad** GLIDEPOINT BY SUNIT QUALITY PROCESS



- Glidepoint Plane Pad
- Industrial
- Sealed
- Multi-touch touchpad (mouse and scroll)
- 86 x 67 x 13 mm , 0,05kg
- Cable length: Standard 1.8m
- Applications: Medical, Military, Industrial, Fleet

SUNIT **Wall-Pad** PROGRAMMABLE INDOOR OUTDOOR FIXED-MOUNT KEYPAD



- Sealed 5-button Pad
- Fixed-Mount
- LED-Lighted
- 2 x LED for Signage
- Silicone-Buttons
- Functions-Programmable
- For Bikes, Vehicles, Industry
- USB-Connected
- For Harsh Conditions
- 9 x Æ 63 mm
- 0,1kg

SUNIT **F-Pad** FINGERTIP-SIGNED KEYPAD



- Programmable
- 5-buttons
- Fingertip-Signs
- USB-Connected
- Fingertip design for dark use
- Sealed
- Cover against Impacts
- Easy to Install
- Small-size 30 x 45 x 15mm

SUNIT **S-Pad** EMBEDDED-CONNECTED KEYPAD



- Single-Button
- Digital-I/O -Connected
- Pull-Down active
- Sealed
- Cover against Impacts
- Easy to Hidden-Install
- Small-size 15 x 25 x 10mm

SUNIT 24-Keypad PROGRAMMABLE HANDHELD KEYPAD



- USB-Connected
- Programmable
- Lighted Buttons
- 14 x Single-function Buttons
- 4 x Dual-function Buttons
- 1 x Quad-function Button
- ON/OFF LED
- One-Hand Design
- Stative for FIX-Mount
- 0,1 kg. PC/ABS/V0+UV

SUNIT VT-PAD / LITE SUNIT Velocity Tracking control units



SUNIT VT-PAD LITE

- Hand-Held Keypad
- USB-Connected
- Lighted Buttons
- One-Hand Design
- Stative for FIX-Mount
- 0,1 kg. PC/ABS/V0+UV

SUNIT VT-PAD

- Hand-Held Keypad
- USB-Connected
- Programmable Lighted Buttons
 - 4x Function Buttons
 - Up/Down Buttons
- One-Hand Design
- Stative for FIX-Mount
- 0,1 kg. PC/ABS/V0+UV

LTE - GNSS ANTENNA



- Multi-Antenna, GNSS + LTE
 - GNSS Frequency: 1575.42/1602 MHz, 50Ω
 - GPS Passive: 5dBic @ zenith
 - GPS Active: 27dB
 - LTE Frequency: 790-960MHz / 1710-2690MHz
 - Full hemispherical coverage for GNSS and GPS
 - Omnidirectional
 - Impedance: 50Ω
 - Dimension: 50.4 x D18 mm
 - Cable: RG-174
 - Length 5m, other Lengths available
 - FAKRA connectors as standard
 - SMA / SMB / Etc. connectors on Order
 - Color: Black
 - 3M sticker for Indoor installation on Windscreen
- Outdoor Mounting-Kit
 - Waterproof
 - Rugged material

SHARK MULTI-ANTENNA's



- A multi purpose shark fin antenna
- Alternative Combinations selectable for UHF, GNSS, GPS, 2G/3G/4G, Wi-Fi and DAB-Whip
- Full hemispherical coverage for GNSS and GPS
- Whip Optional
- Impedance: 50Ω
- Dimension 142 x 76 x 66mm (LWH)
- Cable: RG-174
- Length 5m, other Lengths available
- FAKRA connectors as standard
- SMA / SMB / Etc. connectors on Order
- Color: Black

Wi-Fi ANTENNA



- Single band for 2.4 GHz, dual band models for 2.4-2.5 & 4.9 - 6 GHz
- Gain 2.5 dBi
- Voltage standing wave ratio (VSWR) 2:1 over band
- Impedance: 50 Ohm nominal
- Maximum Power: 10 Watts
- Operating Temp: -40o to +85o C
- Built-in ground plane improves high frequency performance
- Cable Harness 3m (other lengths on order)
- Connector; FAKRA (other connectors on order)

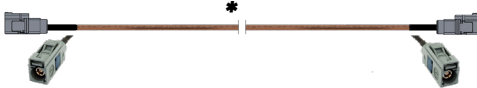
SUNIT CABLES & ADAPTERS

Harnesses & Adapters for Harsh use

VIDEO CABLE



Extension Cable Video Camera
AMP 176284-1 FAKRA

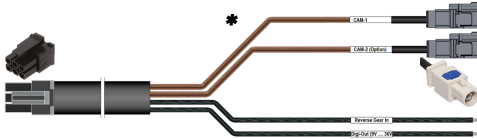


Video Extension Cable
FAKRA - FAKRA



Video Extension Cable
BNC Plug - FAKRA

SUNIT-Screen
Video Extension Cable
Molex- FAKRA

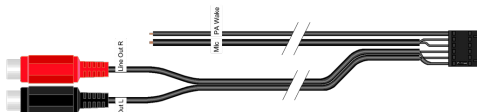


- Cable: Coaxial RG317
- Inner Conductor Silver plated copper clad steel
 - Shield 95% Silver plated copper braid
 - Isolation Dielectric. Operation Temp. -55CO ... +200CO

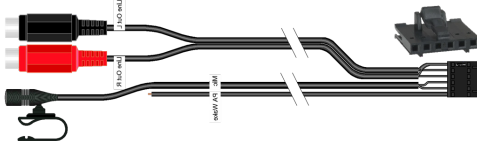
AUDIO CABLE



Audio Cable
3,5mm Jack - 2xRCA Male



Audio Extension Cable
Tyco - RCA-Female



Audio Extension Cable with
Handsfree Mic.
Tyco - RCA-Female

DISPLAY-PORT CABLE



DisplayPort Cable
Male to Male

Wi-Fi CABLE

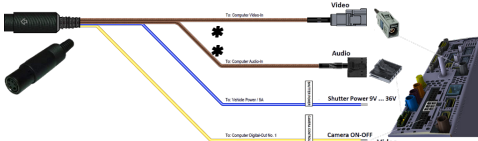


Wi-Fi Extension Cable
SMA Female - FAKRA

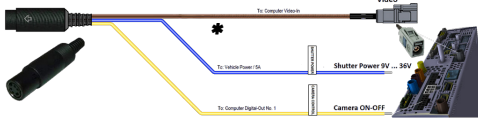
SUNIT CABLES & ADAPTERS

Harnesses & Adapters for Harsh use

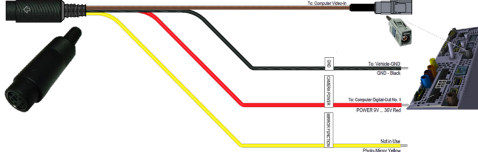
REVERSING CAMERA Cable's



Brigade Reversing Camera Harness for SUNIT Reversing Application Computer Incl. Audio.



Brigade Reversing Camera Harness for SUNIT Reversing Application Computer Excl. Audio.

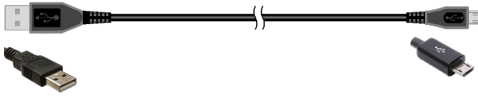


Waeco Reversing Camera Harness for SUNIT Reversing Application Computer.

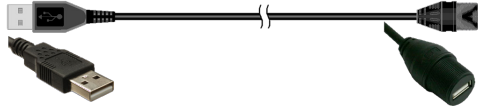


- Cable: Coaxial RG317
- Inner Conductor
 - Silver plated copper per clad steel
 - Shield 95% Silver plated copper braid
 - Isolation Dielectric.
 - Operation Temp.

USB EXTENSIONS



USB2.0 Cable
Type-A - Micro-B



USB2.0 Cable
Type-A - A Sealed



USB2.0 Cable
Type-A Male Sealed - 4-PIN Board connector



USB2.0 Dual Extension Cable Panel Mounted Type A Male - Female

ETHERNET CABLE



Ethernet Extension Cable
RJ45 - RJ45

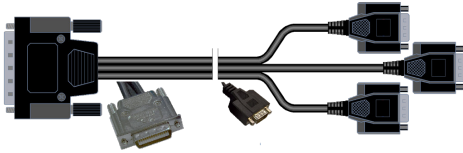


Ethernet Extension Cable
RJ45 Plug - RJ45 Female

SUNIT CABLES & ADAPTERS

Harnesses & Adapters for Harsh use

SERIAL EXTENSIONS



3 x Serial Cable
Multi-connector (DX30/28P) - D9 Male



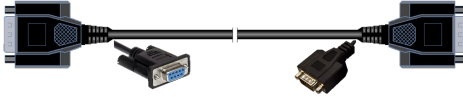
Wire	Signal
WHITE	RS485-
BROWN	RS485+
GREEN	GND

RS Cable
D9 Female - Dual 3-Wire



Wire	Signal
WHITE	RS485-
BROWN	RS485+
GREEN	GND

RS Cable
D9 Female - Single 3-Wire



RS Cable
D9 Male - D9 Female

ANTENNA EXTENSIONS



Antenna Extension Cable GNSS
SMB Male - FAKRA



Antenna Extension Cable FM-Radio
SMA Female - FAKRA



Antenna Extension Cable Cellular
SMA Female - FAKRA



Antenna Extension Cable GNSS
SMA Female-FAKRA



Antenna Extension Cable UHF
SMA Female - BNC M



Antenna Extension Cable GNSS
SMA Female - FME Male



Antenna Extension Cable UHF
FME Female - BNC Male



- Cable: Coaxial RG317
- Inner Conductor Silver plated copper clad steel
 - Shield 95% Silver plated copper braid Isolation Dielectric.
 - Operation Temp. -55CO ... +200CO

SUNIT

